



CLAIRE'S COURT  
SIXTH FORM



# Sixth Form *Programme*

SEPTEMBER 2025-27



AIM HIGH ♦ BELIEVE IN YOURSELF ♦ MAKE A DIFFERENCE

# Contents

03	Welcome	29	Physics
04	Entering the Sixth Form	30	Politics
05	Your Time in the Sixth Form	31	Psychology
06	Sport in the Sixth Form	32	Religious Studies: Philosophy and Ethics
07	Our Courses	33	Sociology
08	Art & Design Fine Art	34	Sport Extended Diploma (BTEC Level 3)
09	Biology	35	Art & Design Textiles
10	Business	36	Travel & Tourism (BTEC Level 3)
11	Business Extended Certificate (BTEC Level 2)	37	Your Future
12	Chemistry	38	Subject Suggestion Table
13	Design & Technology	40	Student Destinations
14	Drama & Theatre	41	Student Apprenticeships
15	Economics	42	Get in Touch
16	English Literature		
17	Extended Project Qualification (AS)		
18	Food Science & Nutrition		
19	Geography		
20	History		
21	Information Technology (BTEC Level 3)		
22	Mathematics		
23	Media Studies		
24	Modern Foreign Languages		
25	Music		
26	Music Technology		
27	Photography		
28	Physical Education		

---

*"We are here to enable you to aim high in your studies and also in every other aspect of your life. Be the best you can be!"*

# Welcome

Do it! Decide to be part of our dynamic and successful Sixth Form. We are small enough to provide the high nurture environment you need to develop and succeed, and big enough to ensure you are part of a rigorous and demanding academic setting to challenge you. The myriad opportunities we offer will enable you to flourish intellectually and personally. During your two years with us you will discover the confident and capable young person inside you, just waiting to emerge.



## Aim High

Our students have enjoyed impressive academic success over the years, achieving top grades in a wide range of subjects, attending Oxbridge, Russell Group, North American and other universities as well as taking advanced and higher level apprenticeships. Just look at our destinations map from last year on page 40. Independent study, effective learning strategies, regular tracking, monitoring and mentoring not only equip you for the wider world of work but also for the demands of modern day life. Your personal tutor will spend time getting to know you and will give you support on a daily basis, but also be there on those days when reaching your goal just seems a stretch too far. Our small class sizes mean that the teachers have plenty of time for you too, they are experts in their field and share your passion for the subjects you are learning which makes for some really interesting lessons, so aim high.

## Believe in Yourself

Our Sixth Form is a community in which you can engage in new and challenging activities, discover your innate abilities and build greater self esteem and resilience. We have a broad 'super' curriculum offering you opportunities to expand your academic knowledge and enrich your understanding. This is in addition to our exciting and inspiring extra curricular activities, so be a participant and get involved, because the more you invest in your personal development, the more you will grow. We'll show you how to adopt the growth mindset, encourage you to try something different, master new skills, take up the challenge and ultimately increase your resolve and resilience. All you have to do is believe in yourself.

## Make a Difference

When you volunteer to help others, you and they both benefit. You build empathy, leadership and communication skills and your beneficiaries enjoy opportunities they would otherwise have missed. You can help your immediate school community by coaching sport, listening to junior readers or mentoring younger pupils. You could volunteer to support our wider school community too. This is a team effort and enhances your ability to collaborate. In our local area, we work with the Lions Club of Maidenhead, Foodshare, The Alexander Devine Children's Hospice and others and if you have a 'pop up' charity idea, we will support you as well. You really can make a difference.

## It's your choice

In our Sixth Form you will be valued and stretched. You will realise your ambitions, discover and hone your personal strengths and qualities and make a difference during two pivotal years which will transform your future. So do it! Join us. If you still have questions after studying this programme, or just want a chat and some guidance, please get in touch. We would be delighted to meet you personally and help you plan your future and realise your ambitions.

**Mr Gary Hope, Head of Sixth Form**

sixthform@clairescourt.com

01628 327560

# Entering the *Sixth Form*

NOVEMBER



## Choosing your subjects

Bespoke advice on choosing your courses; be aspirational.  
Work to your strengths, focus on your interests and future career ideas.

DECEMBER



## Check entry requirements

Submit your choices - and return your subject selection form before the deadline. External candidates must have submitted a Registration Form.

JANUARY



## Scholarships

Apply for a scholarship to be rewarded for your talent and achievement.  
Awards given for academic attainment and excellence in art, choral, drama, music and sport.

FEBRUARY



## Interviews

Tell us your plans, what are your goals and aspirations? What can you contribute to the Sixth Form?

ONGOING



## Offers

Offers are made at various times and depend if you are a current or external candidate. Offers are subject to the course requirements.

JULY



## Induction day

For all students: finding your way around - what to do when, where and how.

AUGUST



## GCSE results day / registration day

Staff are on hand to help you clarify your options and if necessary give guidance if there are any concerns.

SEPTEMBER



## Welcome to the Sixth Form

Term begins!



# Your time in the *Sixth Form*

## On course - on track

- ◆ All A Level courses are linear which means you take all your exams at the end of the two year course, allowing more time for teaching and learning.
- ◆ The BTEC Sports and Information Technology Diplomas are predominantly a continually assessed course, although there is one externally marked assignment as well as one or two controlled assessments.
- ◆ Regular testing is crucial to develop recall. You will take three formal exams per subject across Year 12 and also in Year 13 as well as numerous other end of topic and end of unit tests.
- ◆ The Extended Project Qualification (EPQ) is worth half an A Level and is viewed positively by universities who recognise the transferable study skills you develop from doing it.
- ◆ Your personal tutor, mentor, teachers and the Sixth Form leadership team will know you well and will support and help you to stay on track to be successful and realise your ambitions.
- ◆ We'll track and monitor your progress and feedback to you and your parents when things are going well and perhaps not so well. We believe in being approachable and honest, so the Sixth Form office door is always open.

## Now is the time to...

- ◆ Make the most of the variety of extra curricular activities that are presented to you. Here are just a few that have helped our students develop their knowledge and add value to their CV: CCF, Debating Club, Psychology Society, Film Club, Eco Club and 'Real Life' Skills.
- ◆ Let off steam and stay fit (all good for mental well-being) by engaging in team sports and/or recreational games.
- ◆ Explore your subjects and studies further through our 'super curriculum'. You'll be encouraged to do extra reading, watch videos online, download lectures, visit museums or enter academic competitions. In our virtual library you'll have access to academic journals and research materials.
- ◆ Expand your career knowledge through Sixth Form visits to careers fairs and UCAS Higher Education Exhibitions. Take part in mock interviews with university admissions tutors.
- ◆ Listen and learn; the exceptional range of speakers on our Careers Speakers Programme will inspire and motivate you, as well as give you a real insight into the world of work and the expectations of employers.

## And after Sixth Form

**Your Sixth Form years will no doubt be two of the quickest of your life so far. There is so much to achieve and consider, and part of our role is to help you prepare and make considered choices for the next stage.**

- ◆ The majority of our students go to university; you'll get one to one support to prepare your application whether it is an Oxbridge, Russell Group university or other higher education destination in the UK or abroad.
- ◆ We are experienced in supporting student applications for professional courses such as Law, Dentistry, Medicine and Veterinary studies, including guidance on the University Clinical Aptitude Test (UCAT) and The Law National Aptitude Test (LNAT).
- ◆ Our track record for getting students to their chosen university is outstanding and our relationships with universities including Imperial College London, University of Southampton, University of Birmingham, University of Reading, Oxford Brookes University, Cardiff University and Royal Holloway University of London are invaluable.
- ◆ An increasing number of our students have considered Advanced, Higher and Degree Apprenticeships and if you do, we will provide the guidance you need to make a persuasive application along with interview practice too.

# Sport in the *Sixth Form*

Our school's sports programme is designed to provide a well-rounded sporting experience. We prioritise development with regular training led by experienced coaches who specialise in each sport (Rugby, Football, Cricket, Netball, Hockey, Athletics, Sculling and Sailing).

We participate in regular competition during Wednesday afternoon fixtures against local schools as well as national competitions. With two rugby teams, five football teams, a cricket 1st XI, two sculling quads and a sailing team for boys and girls, there are plenty of opportunities to compete. These matches form an important part of the sports programme leaving weekends free for students to represent local clubs and teams. For girls, there are hockey and netball teams entered into the local leagues, as well as individuals competing for the athletics squad in the summer term. Girls can also elect to join the sculling and sailing squads. Students are encouraged to participate in at least one team sport across the year. For the remaining terms they are offered a membership at David Lloyd where they are supported by staff with strength and conditioning expertise.

At Claires Court, our commitment to both high-quality training and competitive fixtures, ensures a holistic sports education, preparing students not only for success in their chosen sport but also a chance to participate and excel outside of academic studies. Many students go on to gain honours at regional and national level.

Our school's games afternoons, held every Wednesday and Friday, offer students a diverse array of sporting opportunities. You can train and compete with your team, visit Maidenhead Sailing Club with the Claires Court Sailing team, or row out of Maidenhead Rowing Club. There is something for everyone!



## Sport Development Programme

We offer sports development programmes in Rugby and Football, with timetabled training sessions for those who are dedicated to improving their performance in these sports. Highly qualified staff will improve your all-round ability using strength and conditioning sessions, high level skills sessions and video analysis. These sessions are timetabled in alongside your academic studies. For girls, these sessions typically adopt a strength and conditioning focus tailored to individual needs, and can be utilised to inform training requirements through the use of video analysis.

## Touring

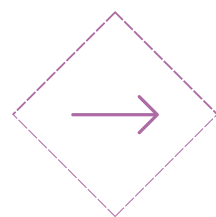
In July 2026 we are planning a Rugby and Football tour to South Africa. This is an excellent opportunity to experience everything South Africa has to offer. We play against local teams, participate in many exhilarating activities and, of course, go on safari. The tour also allows students to experience a different culture and engage with local communities.

Girls will be offered the opportunity to attend a Netball Tour to Dubai in Easter 2025. Here they will play local schools and clubs and enjoy the excursions Dubai has to offer!





# Our Courses





# Art & Design Fine Art

## About the course

The A Level Fine Art course at Claires Court aims to develop the creative potential of the individual. Work is project based and you will be encouraged to explore your ideas whilst developing your core skills - drawing and painting.

## Requirements for success

### Entry requirements:

To achieve the maximum potential for the course, you should have achieved a Grade 5/6 pass (or equivalent) at GCSE in a broad Art and Design or Textiles based discipline, with a supporting portfolio of good quality work.

### Who is suitable for this course?

We are looking for students who are keen to develop an advanced understanding of visual language and communication and to create satisfyingly high levels of technical skill and dexterity. We want you to develop both your self-awareness and your observation of the world around you. Above all, we want you to be self-motivated in order to meet the requirements of the practical work.

## Course structure

Work is project based; there is one coursework project and one externally set assignment. There is a strong emphasis on observational skills and direct personal experience. An experimental approach using a wide range of media introduces students to a variety of skills and techniques with which you can communicate your ideas. Projects are designed to stimulate visual awareness through pictorial research using historical and contemporary images.

Students will be taught to view artists' work within its context and to recognise selected artists who are relevant to their own creative development. Students will pursue an idea from initial research and preparation through to final painting and presentation.

## Course outline

Component one - the personal investigation involving supporting studies and practical work.

Component two - the externally set assignment with supporting studies and preparatory work.

## Method of study

A Level Art encourages an adventurous and enquiring approach to Art and Design. Students will spend their time researching artists, gathering visual references and taking photographs, in addition to working from 'real life'. Students will experiment with assorted media and techniques as well as developing ideas towards a final outcome. There will be a requirement to travel to exhibitions, art galleries, architectural sites and studios. Students will be expected to demonstrate an understanding of past and contemporary art and design practice and be able to produce artwork that embraces a range of ideas.

## How is the course assessed?

The following assessment criteria is applied to all units:

AO1 - Develop ideas through sustained and focused investigations informed by contextual and other sources, demonstrating analytical and critical understanding.

AO2 - Explore and select appropriate resources, media, materials, techniques and processes, reviewing and refining ideas as work develops.

AO3 - Record ideas, observations and insights relevant to intentions, reflecting critically on work and progress.

AO4 - Present a personal and meaningful response that realises intentions and, where appropriate, makes connections between visual and other elements. Each assessment carries an equal percentage of 25% of the final mark.

The weighting of component one is 60% and Component two is 40%.

## Where does it lead?

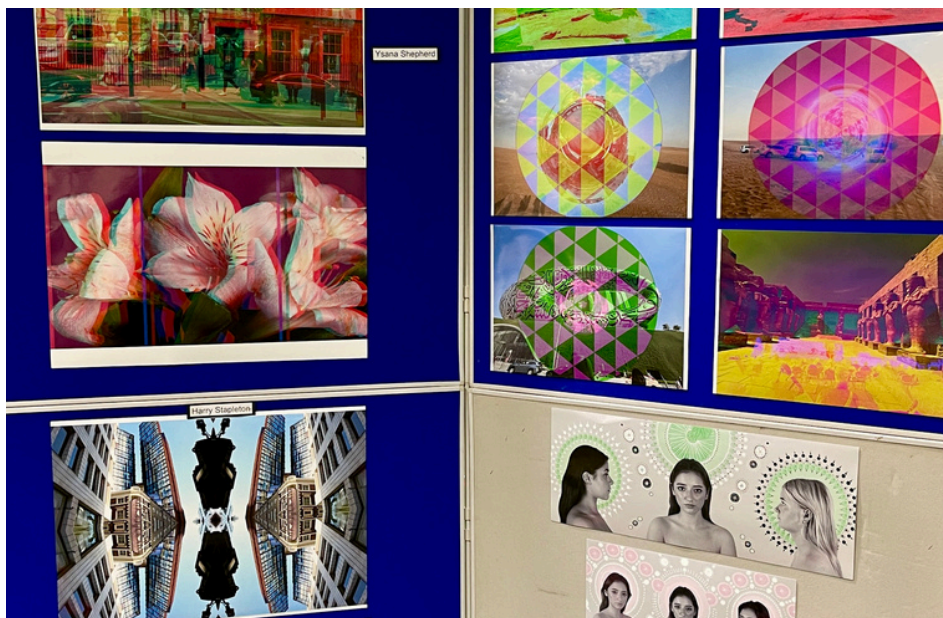
Foundation Course in Art and Design which would be followed by a degree course (BA) in a specialist area of Art and Design such as Fine Art, Textiles, Graphic Design, Ceramics, Fashion, Jewellery, Furniture Design, Product Design and Film-making.

Awarding Body: AQA

Contact: Miss Lauren Moorhouse

Email: [1ma@clairescourt.net](mailto:1ma@clairescourt.net)

*Course specifications may be subject to change as directed by the examining board.*





# Biology

## About the course

Biology is an exciting and rapidly developing subject, with many new discoveries and developments being announced every week. The study of living things has undergone tremendous expansion in recent years and topics such as cell biology, evolutionary biology and biotechnology are advancing rapidly.

## Requirements for success

### Entry requirements:

You should have achieved at least a Grade 7 at GCSE Biology and a Grade 6 or higher in GCSE Mathematics. Students taking Combined Science GCSE should have at least Grade 7-7.

### Who is suitable for this course?

If you have a passion for living organisms, including plants and how they function, you will find this course interesting, stimulating and challenging. A love of cuddly animals and the occasional viewing of a David Attenborough programme will not be enough to allow you to face the demands of this rigorous course which requires a command of a vast terminology and application of knowledge. Students considering a medically related course at University are strongly advised to study Biology.

## Course structure

A Level Biology is comprised of six modules which are examined at the end of Year 13 for the A Level qualification.

*"When I came in for my induction day people were very welcoming and friendly."*

## Course outline

### Units covered:

Module one: Development of practical skills in Biology

Module two: Foundations in Biology

Module three: Exchange and transport

Module four: Biodiversity, evolution and disease

### In Year 13, the students will study two further modules

Module five: Communication, homeostasis and energy

Module six: Genetics, evolution and ecosystems

Modules one to six will be examined in three exam papers to be taken at the end of the course.

## Method of study

A variety of activities will be used including practical work, dissections and field work to support the topics being studied and various YouTube clips will be viewed to illustrate teaching points. While learning is mostly active there will also be theory lessons where relevant principles and ideas will be discussed and notes taken. Students will also be expected to work both collaboratively and independently completing creative work and presentations. Students will be encouraged to make use of the many biologically related books and articles in the library.

## How is the course assessed?

Students will be required to take three formal written papers at the end of the A Level course. The style of questions in these assessments will comprise of a mixture of multiple choice, structured questions and extended written response questions covering both theory and knowledge of practical techniques.

## Where does it lead?

Recently cited as one of the more difficult subjects, A Level Biology is seen as essential not only for traditional degree courses such as Medicine, Veterinary Science, Dentistry and Physiotherapy, but also for the ever expanding branches of Biology such as Bioscience, Genetics and Immunology. Biologists are essential to the world we live in and the environmental challenges we face.

Awarding Body: OCR

Contact: Miss Sadia Mirza

Email: [sam@clairescourt.net](mailto:sam@clairescourt.net)

*Course specifications may be subject to change as directed by the examining board.*



# Business

## About the course

A two year linear A Level in Business during which all aspects of Business Management are covered.

## Requirements for success

An ability to read and understand business case studies and to apply subject knowledge in analysing and evaluating business problems and challenges within the prescribed business.

### Entry requirements:

It is not necessary to have studied Business Studies at GCSE level since the A Level course covers all of the GCSE subject material but in much greater depth. You must be literate and numerate since there are a fair number of mathematical calculations and good essay writing is essential. Ideally you should have achieved a Grade 5 at English and Grade 6 Maths at GCSE level.

### Who is suitable for this course?

Any student who is fascinated by the business world that surrounds us and have a curiousness about how it all works.

## Course structure

A Level Business has three written examinations at the end of the A Level year.

## Course outline

The first year course explains what constitutes a business, discusses the role of managers, leadership and decision making within businesses of all sizes with particular emphasis on the four main functions of business: marketing, operations, human resources and finance.

The A Level course includes the first year material and focuses on analysing the strategic position of a business, choosing a strategic direction for the business and choosing the correct strategies within each business function and managing strategic change within the business.

## Method of study

Lessons are taught by the highly experienced A Level teaching staff. Students are expected to make their own notes based on the prescribed textbook with additional explanatory notes provided by the teachers. Homework is set regularly to enable the students to hone their exam writing skills.

## How is the course assessed?

**There are three exam papers. Each exam paper is:**

- A two hour written exam
- 100 marks in total
- 33.3% of A Level

Paper one: Three compulsory sections  
Paper two: Three data response compulsory questions  
Paper three: One compulsory case study followed by six questions approximately.

## Where does it lead?

The course leads to any undergraduate degree course or joint honours in Business Management and into a Business career in industry or the public sector. It can lead on to other functional roles within business.

Awarding Body: AQA  
Contact: Mrs Laura Jakes  
Email: [lmj@clairescourt.net](mailto:lmj@clairescourt.net)

*"I found I can relate business to the real world and now take a different view of "Dragons' Den!"*

*Course specifications may be subject to change as directed by the examining board.*





# BTEC Extended Certificate in Business

Level 2

## About the course

The BTEC Level 2 Extended Certificate in Business will develop and enhance your skills, knowledge and understanding of business functional areas and the external environment within which they operate. This will be approached in a practical way that is relevant to the work world today.

The qualification can run alongside re-sit options for core subjects such as Maths and English, enabling you to gain a further qualification during this period of transition and develop the skills and attributes to be a successful Level 3 learner or employee.

## Requirements for success

### Entry requirements:

You do not need to have studied Business at GCSE, but an interest in the subject would help. We would expect you to have 2 GCSE qualifications at Grades 9-3 or a Level 1 vocational qualification.

The optional units provide an opportunity to develop a broader understanding of the business sector. In addition, it introduces a limited number of specialist areas and the opportunity to acquire some of the practical skills identified by employers as the fundamental building blocks for future competence in the workplace.

In addition to this, as the course is based around the world of business, we engage local businesses to support the programme whereby you will benefit from guest speakers/visits to businesses, enabling you to have a practical insight into the topics studied.

## How is the course assessed?

As the programme is primarily coursework based, you will be given homework based around your assignments and your teacher will closely monitor your progress and provide feedback to help you meet the requirements of each assignment.

In order to pass an assignment you will need to produce evidence, this is proof that you have met the requirements of the unit. All units are broken down in exactly the same way. Every unit is introduced with learning outcomes, which describe what you will achieve during the completion of the unit.

The assessment objectives will describe what you are required to do in order to achieve each learning outcome.

You are able to achieve a Pass, Merit or Distinction for each unit.

## Where does it lead?

This programme can help you to achieve your full potential in the world of business and pursue further opportunities such as employment or apprenticeships.

In addition you will be able to study a Level 3 qualification if you achieve a Merit or above. In particular students may pursue qualifications such as BTEC Level 3 in Business or Travel and Tourism. It can also be a stepping stone to a range of A Level subjects in Sixth Form - popular options being A Level Business and/or Media.

## Textbook

The textbooks used for this course are:

- BTEC Level 2 First Business Student Book by Mike Neild et al

Awarding Body: Pearson  
Contact: Mrs Laura Jakes  
Email: [lmj@clairescourt.net](mailto:lmj@clairescourt.net)

*Course specifications may be subject to change as directed by the examining board.*

## Course outline

All of the BTEC qualifications are primarily coursework based. The topics that you will study are as follows (compulsory units are in bold):

- **Enterprise in the Business World**
- **Finance for Business**
- **Principles of Marketing**
- Promoting a Brand
- Small Business Planning
- Introducing Project Management
- Delivering and Improving Customer Services
- Introducing International Business



# Chemistry

## About the course

Chemists try to understand how and why substances behave as they do. Through their studies, past generations of chemists have helped to shape the world as we know it today. They have developed life-saving drugs, fertilisers to increase crop yield and man-made materials designed to manufacturers' specifications.

By studying Chemistry, you will:

- develop essential knowledge and understanding of the different areas of the subject and how they relate to one another
- appreciate how society makes decisions about scientific issues and how the sciences contribute to the success of the economy and society
- get an insight into the way Chemistry is helping to shape the future and its part in combating environmental issues.

The skills acquired by students who have successfully completed the A Level course are highly prized and open the door to a wide variety of higher courses and careers.

## Requirements for success

### Entry requirements:

To achieve the maximum potential for the course, you should have achieved at least a Grade 7 at GCSE Chemistry or a Grade 7-7 in Combined Science. As there is a mathematical element to the course we strongly recommend that you have a Grade 6 or higher in GCSE Mathematics.

### Who is suitable for this course?

Students who have a natural curiosity about the material

world would be well suited to this course. Achieving an A Level in Chemistry makes a statement that you have acquired valuable skills such as problem solving, the ability to deal with numbers and abstract concepts, the ability to understand models to make predictions, and good computational as well as practical skills.

## Course structure

A Level Chemistry is comprised of six modules. These are examined at the end of Year 13 for the A Level qualification. At least 15% of all exams will be based around knowledge of practical techniques and at least 20% of all exams will be mathematical content.

## Course outline

### Modules Studied in Year 12:

Module one: Development of practical skills in chemistry

Module two: Foundations in chemistry

Module three: Periodic table and energy

Module four: Core organic chemistry and analysis

Module five: Physical chemistry and transition elements

Module six: Organic chemistry and analysis

Modules one to six will be examined in three exam papers to be taken at the end of the course.

Module one: Development of practical skills in chemistry

Module five: Physical chemistry and transition elements

Module six: Organic chemistry and analysis

Modules one to six will be examined in three exam papers to be taken at the end of the course.

## Method of study

During the course much emphasis is

placed on practical work and problem solving tasks and students will be expected to work individually or collaboratively to achieve the expected standard. There will also be theory lessons where relevant principles and ideas will be discussed and notes taken. Videos and computer programmes will be used to illustrate concepts. Students are encouraged to explore the subject, to complete their own research notes and to seek tutor support whenever it is needed.

## How is the course assessed?

A combination of assessment techniques will be used. Students will be required to take three formal written papers at the end of the A Level course. These will include mathematical problem solving questions and descriptive questions and will comprise of a mixture of multiple choice, structured questions and extended response questions, covering theory and knowledge of practical techniques.

## Where does it lead?

There are numerous degree courses that require A Level Chemistry as either a prerequisite or highly desirable. These include all Science and Engineering courses, Medicine, Veterinary Science, Dentistry and Physiotherapy. Employers also look favourably upon this qualification.

Awarding Body: OCR

Contact: Mrs Michele Coghlan

Email: [mnc@clairescourt.net](mailto:mnc@clairescourt.net)

*Course specifications may be subject to change as directed by the examining board.*





# Design & Technology

## About the course

The course is weighted equally with 50% being practical and 50% written examination.

The Pearson Edexcel Level Three Advanced GCE in Design and Technology (Product Design) consists of one externally-examined paper and one non-examined assessment component. You must complete all assessments in May and June in any single year.

Product Design is in many ways the natural progression for those who have studied Resistant Materials at GCSE.

This course gives you the chance to be creative and innovative as you develop your product design skills and learn about the complex relationships between design, materials, manufacturing, marketing and the user, covering all aspects of the design process.

## Requirements for success

### Entry requirements:

You will need to have achieved at least a Grade 6 at GCSE in Design and Technology.

### Who is suitable for this course?

Creative individuals who like to think outside the box. You will be encouraged to suggest innovative solutions, propose commercially viable design solutions, develop, test and trial working models and prototypes for a variety of products using innovative concepts and materials. You will also learn about contemporary design, modern materials and industrial production methods.

## Course structure

Level three - two year course.

## Course outline

### Component one:

Principles of Design and Technology. There will be a written examination of two hours

and 30 minutes worth 50% of the qualification (120 marks). The written examination will take place at the end of Year 13.

### Component two:

Independent Design and Make Project (Paper code: 9DT0/02). This is a non-examined assessment worth 50% of the qualification (120 marks). The design and make project will span across Year 12 and 13.

## Method of study

### Component one:

Principles of Design and Technology. Students will study how we design for maintenance and a cleaner environment looking at current legislation in our industry.

### Component 2:

Independent Design and Make Project. Students will undertake a substantial design, make and evaluate project which requires you to produce a portfolio and a prototype outcome.

## How is the course assessed?

At the end of Year 13 there is one two hour and 30 minutes paper which is assessed externally. The design portfolio and the practical work are assessed internally and moderated externally.

## Where does it lead?

This qualification would open pathways to Engineering, Manufacturing, Product Design, Interior Design, Industrial Design and Architecture amongst others.

Awarding Body: Pearson  
Contact: Mr André Boulton  
Email: and@clairescourt.net

*"Claire's Court Sixth Form has been an amazing experience for me. I love the atmosphere and the small class sizes."*

*Course specifications may be subject to change as directed by the examining board.*



# Drama & Theatre

## About the course

The course will be assessed with a weighting of 60% practical and 40% written exam.

This qualification emphasises practical creativity alongside research and theoretical understanding. You will learn through seeing theatre and making theatre. You can choose to develop as a performer, designer (lighting, sound, set, costume, hair and make-up).

## Requirements for success

### Entry requirements:

You should have achieved Grade 4 English Language and Grade 4 English Literature in GCSE. It is a demanding course due to the amount of reading and written work, and rehearsal time. Group work is at the heart of the course.

### Who is suitable for this course?

You will need passion, commitment and creativity.

Students will participate in the creation, development and performance of two pieces of theatre:

- a devised piece
- an extract from a text.

Students will produce a process and evaluation report.

### Component three:

Text in Performance (two hours and 30 minutes written examination worth 40% of qualification).

Three texts will be studied from the perspective of a designer, actor and designer. Three questions must be answered.

## Method of study

Learning takes place through the shared experience of watching theatre and creating theatre as part of a group. No two Drama lessons are quite the same.

Students will do background research on plays, performances and theatre practitioners, watch pictures and clips from performances, read plays, rehearse, analyse, appreciate, evaluate, solve problems, acquire acting and design techniques. Students will write about plays, live theatre and their own performances.

Ultimately, common to all lessons are: working with others to understand drama and the theatre and to create theatre.

## Where does it lead?

Students of A Level Drama and Theatre emerge with a toolkit of transferable skills preparing them for their next steps. Drama and Theatre provides a strong stand-alone qualification, with real and credible value for students in both higher education and in their future careers. This course refines students' collaborative skills, their analytical thinking and their approach to research. They learn to evaluate objectively and develop a sound appreciation of the influences that cultural and social contexts can have on decision making.

Awarding Body: Eduqas WJEC

Contact: Mrs Maggie Olivier

Email: mco@clairescourt.net

*Course specifications may be subject to change as directed by the examining board.*

## Course structure

The new linear Drama and Theatre A Level is a two year course, comprising three components.

### Component one:

Theatre Workshop (internally assessed, externally moderated - 20% of qualification).

Students will be assessed on either acting or design. Students will participate in the creation, development and performance of a reinterpretation of an extract from a text, using the techniques and working methods of either an influential theatre practitioner or a recognised theatre company. Candidates must produce a creative log as well.

### Component two:

Text in Action (externally assessed by a visiting examiner - 40% of qualification). Students will be assessed on either acting or design.





# Economics

## About the course

A two year linear A Level in Economics during which all aspects of Micro and Macro Economics are covered.

## Requirements for success

An ability to read and understand economic extracts and to apply subject knowledge in analysing and evaluating economic problems and challenges within the prescribed economic sector.

### Entry requirements:

It is not necessary to have studied Business Studies or Economics at GCSE level since the A Level course covers all of the GCSE subject material but in much greater depth. You must be literate and numerate since there are a fair number of mathematical calculations and good essay writing is essential. Ideally you should have achieved a Grade 5 in English and Grade 6 Maths at GCSE level.

### Who is suitable for this course?

Any student who is fascinated by the economy that surrounds us and a curiousness about how it all works.

as well as the ability to analyse the context accurately and reach logical conclusions about the economic problem concerned. A Level exam papers require extensive research into the Global and European economies.

## Course outline

The first year course covers all aspects of microeconomics, explains the operations of markets and market failure as well as all aspects of macroeconomics and the national economy in a global context.

The A Level course includes the first year material with the additional focus of the role of individuals, firms and markets in market success and failure as well as the national and international economy in more detail.

## Method of study

Lessons are taught by the highly experienced A Level teaching staff. Students are expected to make their own notes based on the prescribed textbook with additional explanatory notes provided by the teachers. Homework is set regularly to enable the students to hone their exam writing skills.

## How is the course assessed?

There are three exam papers.

Each exam paper is:

- Two hour written exam
- 80 marks
- 33.3% of A Level

### Paper one:

- Data response questions
- Essay questions

### Paper two:

- Data response questions
- Essay questions

### Paper three:

- Multiple choice questions
- Case study questions

## Where does it lead?

The course leads to any undergraduate degree course or joint honours in Economics, banking, accounting and on into a career in industry or the public sector.

Awarding Body: AQA  
Contact: Ms Stella Neal  
Email: [sdn@clairescourt.net](mailto:sdn@clairescourt.net)

*Course specifications may be subject to change as directed by the examining board.*

*"Claire's Court really feels like a second home to me."*

## Course structure

The course consists of four modules over the two years. The examination papers consist of a multiple choice element as well as data response questions of various lengths to assess the students' ability in demonstrating knowledge and the application of that knowledge in the context provided,



# English Literature

## About the course

The general aims are to encourage students to read widely and independently; engage critically and creatively with texts; develop and apply their knowledge of literary criticism; explore the contexts of texts studied and deepen their appreciation of literature.

## Requirements for success

### Entry requirements:

You should have achieved a grade 6 or above at both English Language and English Literature GCSE. However, there is certain room for negotiation if you have excelled in the examination elements of your GCSEs.

### Who is suitable for this course?

If you have a passion for reading and writing you should strongly consider English Literature at A Level, as well as if you're looking for a qualification with a reputation for being academically rigorous.

## Course structure

The A Level qualification consists of three externally examined papers and one coursework component. The qualification requires the study of eight texts plus unseen poetry.

*"Our daughter is determined to succeed and achieve top grades in her studies."*

*Year 12 Parent*

## Course outline

A Level

### Component One:

- Drama (30% of overall qualification)

Students study:

- One Shakespeare play and one other Drama play.
- A collection of essays and critical essays.

### Component Two:

- Prose (20% of overall qualification)

Students study:

- Two prose texts sharing a common theme.

### Component Three:

- Poetry (30% of overall qualification)

Students will:

- Prepare for responding to an unseen modern poem, through study of poetic form, meaning, language and style.

Students study:

- A range of poetry from the Victorian period.

Coursework: (20% of the overall qualification). Students produce one assignment of 2500-3000 words based on two texts.

## Method of study

Much time will be spent reading and analysing the various texts studied on the course in a tutorial style environment.

However, where possible, there will be opportunities to see literature come to life through theatre visits and viewings of cinematic interpretations of texts.

## How is the course assessed?

The course is assessed through five main assessment objectives (AOs): AO1 Articulate informed responses to literary texts, using associated terminology and coherent written expression.

AO2 Analyse ways in which meanings are shaped in literary texts.

AO3 Demonstrate understanding of the significance of the contexts in which literary texts are written and received.

AO4 Explore connections across literary texts.

AO5 Explore literary texts informed by different interpretations.

## Where does it lead?

The study of English Literature at A Level will leave open a wide variety of career paths, whilst closing very few.

Awarding Body: Pearson  
Contact: Mr Luke Wespieser  
Email: law@clairescourt.net

*Course specifications may be subject to change as directed by the examining board.*





# Extended Project Qualification (AS)

## About the course

You choose a topic to research and either write a 5,000 word essay or make an artefact such as a work of art, a video, a play script or a music score, supported by a shorter report.

## Requirements for success

### Entry requirements:

There are no entry requirements.

### Who is suitable for this course?

Every Year 12 student has the opportunity after their first half term to think about this AS level course and decide if they wish to undertake a project. You need to be self-motivated, happy to work independently and very determined. It helps to have a very deep interest in the topic chosen.

### Examples of recent A/A\* projects include:

#### Arts

'How much influence did Freud have on the surrealist painters?', 'What were the influences on traditional Serbian national costume?', 'The representation of women in music videos.'

#### Science

'How polluted is York Stream in Maidenhead?', 'What is the best method to raise orphan lambs?'

#### Psychology

'Does birth order affect the personality of an individual?',' Does age affect the extent to which people conform?'

#### Technology

'Is it possible to build a working hovercraft with power tools and a limited budget?'

#### History

'The Vienna Congress of 1814 and its effect on international relations until the First World War'.

## Course structure

This is a complete AS level and is graded from A\* to U, worth the normal UCAS points.

## Course outline

There is a programme of lessons and workshops taking 30 guided learning hours on acquiring the skills needed to complete a successful project. These include planning, research and referencing, report writing, presentation to an audience and evaluation. Students visit Royal Holloway University Library to learn how to use an academic library and they have access to all printed and e-resources there.

## Method of study

Students work independently on their project, but with the guidance of a supervisor. Students will manage their A Level subjects alongside their EPQ.

## How is the course assessed?

The supervisor of a project marks the completed project and its progress by the evidence presented in the EPQ log and the final presentation and report or artefact. The planning, monitoring of progress and evaluation

of the project are worth more marks than the final product. The projects are internally moderated by the school coordinator and externally moderated by AQA. There are no examinations.

## Where does it lead?

The EPQ as a course does not lead to any particular course at university or employment. However it is highly thought of by universities as it demonstrates that students have learned vital skills needed for independent study on a degree course. Many students have found the extra knowledge and skills has opened doors to a particular career.

Awarding Body: AQA  
Contact: Ms Stella Neal  
Email: [sdn@clairescourt.net](mailto:sdn@clairescourt.net)

*"I am learning more about a topic that is of real interest to me whilst developing skills that will help me with my university studies."*

*Course specifications may be subject to change as directed by the examining board.*



# Food Science & Nutrition

## About the course

The WJEC Level Three Diploma in Food Science and Nutrition has been designed to provide students with underpinning knowledge, understanding and skills to progress to further study and training. It offers exciting and interesting experiences that focus on knowledge and understanding linked to the food production industry.

## Requirements for success

### Entry requirements:

It is not essential to have studied Food Studies at GCSE but it would be helpful alongside GCSE Science. Achieving at least a pass at GCSE in English Language is essential.

### Who is suitable for this course?

You will need to be able to demonstrate: the ability to work independently; research skills; motivation and an interest in the food industry. You will complete a portfolio which will go towards the final assessment. Therefore you will need to manage your time effectively and meet the deadlines set.

## Course outline

The WJEC Level 3 Diploma in Food Science and Nutrition is made up of four units:

- Unit one: Meeting the nutritional needs of specific groups
- Unit two: Ensuring food is safe to eat
- Unit three: Experimenting to solve food production
- Unit four: Current issues in Food Science and Nutrition

## Method of study

Using a range of skills such as research, analysis, planning and evaluation; students will gain an in depth understanding of Food Science and Nutrition and the impact on the lives of individuals and on society today. Students will carry out practical tasks, competently and confidently, demonstrating flair and precision and will analyse the results, drawing sound conclusions from their findings. At every opportunity students will be able to identify and transfer accurately in depth knowledge and understanding from one task to another.

## How is the course assessed?

The WJEC Level three Diploma in Food Science and Nutrition is assessed through a combination of a written exam and an external assignment set and marked by WJEC, along with two internally marked assignments.

Achievement is based on a student's ability to meet the assessment criteria and units can be awarded a grade of pass, merit or distinction.

## Where does it lead?

By studying Food Science and Nutrition you will gain the required knowledge to support entry into a variety of higher education courses such as:

- BSc Food and Nutrition
- BSc Human Nutrition
- BSc (Hons) Public Health Nutrition
- BSc (Hons) Food Science and Technology

An understanding of Food Science and Nutrition is relevant to many industries and job roles. Care providers and nutritionists in hospitals use this knowledge, as do sports coaches and fitness instructors. Hotels and restaurants, food manufacturers and government agencies also use this understanding to develop menus, food products and policies that support healthy eating initiatives. Many employment opportunities within the field of Food Science and Nutrition are available to graduates.

Awarding Body: WJEC  
Contact: Miss Heather Frost  
Email: haf@clairescourt.net

*Course specifications may be subject to change as directed by the examining board.*

## Course structure

The WJEC Level Three Diploma in Food Science and Nutrition is studied over two years and is made up of four units. All students must take units one and two and then select either unit three or unit four. Studying one of the two optional units allows students the opportunity to study subjects of particular interest or relevance to them, building on previous learning and experiences.





# Geography

## About the course

The course explores the key principles, concepts and processes that explain geographical phenomena and landscapes. It maintains the balance between physical and human geography, whilst ensuring relevance to the modern world.

## Requirements for success

### Entry requirements:

You should have achieved a minimum of Grade 6 at GCSE in the Higher Tier papers. A Grade 5 at GCSE English and Maths is also required.

### Who is suitable for this course?

The course will appeal to you if you:

- Have an interest in the world around you and how it is likely to develop in the future
- Enjoy investigating and discussing modern issues and debating the relative merits of their solutions
- Understand the different paradigms needed to comprehend the world's Geography
- Wish to continue to develop the academic rigour and challenge necessary for higher education and the workplace.

*"Our son is happy and is thoroughly enjoying the subjects he has chosen."*

*Year 12 Parent*

## Course structure

The course is studied over two years with three A Level exams sat at the end of Year 13, alongside a non-examined assessment.

## Course outline

### Units covered:

Subject to specification:

- Core physical themes are water and carbon cycles and the coastal landscape system
- Core human themes are changing spaces; making places, global migration and human rights
- Debates within geography concerning disease dilemmas and the hazardous Earth.

## Method of study

The course will be studied as a whole class with opportunities for small group work, discussions, debates and structured examination technique learning.

The non-examined assessment makes up 20% of the students' overall grades and although they have guided sessions, this is an independent project with very limited teacher input.

## How is the course assessed?

A combination of three written exams and a non-examined assessment of 3,000 to 4,000 words at A Level.

## Where does it lead?

Geography is conducive to almost any career, as it covers a wide spectrum of skills from Geography based careers to careers in Business, social sciences and Sciences.

Awarding Body: OCR  
Contact: Mr Damian Gray  
Email: [drg@clairescourt.net](mailto:drg@clairescourt.net)

*Course specifications may be subject to change as directed by the examining board.*



# History

## About the course

A Level History covers a 200 year chronology, studying some British History, plus the history of at least one other country. There is also a coursework component in Year 13.

## Requirements for success

### Entry requirements:

Preferably at least a Grade 6 at GCSE History and a Grade 6 in English Language.

### Who is suitable for this course?

You must enjoy debate and discussion, have an enquiring mind and enjoy investigating information. You need to have an interest in the past and its relevance to the present together with an ability to communicate ideas effectively, both orally and in writing. You should enjoy asking questions of the present and exploring the past unbiased and critically.

If you have studied History GCSE you will find that the skills you learned and the knowledge you acquired will form a solid foundation for further studies at A Level.

## Course outline

### Route C:

Religion and state in early modern Europe.

### Paper one:

England, 1509-1603: authority, nation and religion: a seminal period in British History covering the English Reformation which has been described as the 'first Brexit'.

### Paper two:

Luther and the German Reformation: This gives an overview and understanding of European history which still resonates over the continent today and leads to a better understanding of our nearest neighbours.

### Paper three:

Civil rights and race relations in the USA: 1850-2009: both topical and crucial to issues that challenge our society today. Coursework: A 3,000-4,000 word essay on historical interpretations on a historical controversy of your choice. Past subjects have included the Crusades, the Holocaust and Causes of the Wall Street.

The coursework component accounts for 20% of the student's grade and although there is a taught unit on historical interpretations, this is an independent piece of work with limited teacher input.

## How is the course assessed?

There are two exams (Papers 1 and 39) each worth 30% of your A Level grade which last two and a quarter hours. One exam (Paper 2) worth 20% of your grade which lasts one and a half hours and the coursework also worth 20%.

## Where does it lead?

History is a well-respected A Level that opens up a variety of options for employment and further study, wherever the skills of evaluation, detailed and focused research and the weighing up of evidence are valued. This would include careers in law, journalism, teaching, banking and business.

Awarding Body: Pearson  
Contact: Ms Camilla Bullough  
Email: [crb@clairescourt.net](mailto:crb@clairescourt.net)

*Course specifications may be subject to change as directed by the examining board.*

## Course structure

The course is studied over two years with three exams at the end of Year 13. There is also a 3,000 - 4,000 word essay coursework component on historical interpretations.

## Method of study

Whole class, individual and group work to prepare presentations, discussions and essays. Exam techniques are taught and extensively practiced. Use is made of online resources such as the National Archives and those provided by the Historical Association.





# Information Technology BTEC

Level 3

## About the course

The Pearson BTEC Level Three National Extended Certificate in Information Technology is intended as an Applied General qualification and is equivalent in size to one A Level. It is designed for students interested in an introduction to the study of creating IT systems to manage and share information, alongside other fields of study, with a view to progressing to a wide range of related higher education courses.

## Requirements for success

### Entry requirements:

GCSE Mathematics minimum Grade 5 and GCSE English minimum Grade 5 or above.

### Who is suitable for this course?

Anyone who has a keen interest in IT and is aiming to progress and study at University, or use the skills developed through the qualification and apply them in an apprenticeship.

## Method of study

Whole class, individual and group work to prepare presentations, discussions and written essay answers. Use is made of online resources in the ever developing world of IT. Practical skills require students to research and work individually as they are assessed on these through assessed materials.

## How is the course assessed?

### Students study three mandatory units:

Unit one: Information Technology systems is assessed through a two hour written examination. The result in this unit contributes to 33% of the final qualification grade.

Unit two: Creating information systems to manage information is assessed through a 10 hour examination board set task that students will complete over a one week period. The result in this unit contributes to 25% of the final qualification grade.

Unit three: Using social media in business is assessed through an internally set assignment that students will complete during their timetabled lessons. The result in this unit contributes to 25% of the final qualification grade. The remaining 17% of the final qualification grade is from an optional unit assessed through an internally set assignment.

## Where does it lead?

BTEC Level Three Extended Certificate in Information Technology provides a suitable foundation for the study of IT or Computer Science related courses in higher education. Equally it is suitable for candidates intending to pursue careers or further study in IT, or as part of a course of general education.

Awarding Body: Pearson  
Contact: Mr Gary Hope  
Email: [gth@clairescourt.net](mailto:gth@clairescourt.net)

*Course specifications may be subject to change as directed by the examining board.*

## Course structure

### There are three mandatory units:

- Information Technology systems
- Creating systems to manage information
- Using social media in business

The fourth unit is optional between data modelling or website development.

These are studied over the two year period spanning Years 12 and 13.



# Mathematics

## About the course

Mathematics A Level is an exciting and challenging subject. The pure side of the course has a natural elegance and beauty whilst also providing the tools and techniques needed to analyse and solve problems in a way that is often hugely satisfying. The applied side of the course provides opportunities to create and apply mathematical models to understand and predict outcomes to real world problems. If you have a particular aptitude and passion for maths, in addition to following the A Level maths course, it is possible to study Further Maths to AS Level.

## Requirements for success

### Entry requirements:

Grade 7+ in either GCSE or IGCSE Maths

### Who is suitable for this course?

The students who achieve the best A Level grades in Mathematics are those who think logically, enjoy and are good at algebra, solving number puzzles and spotting number patterns and who are willing to work hard and persevere to solve challenges. In order to be considered for Further Maths it is necessary to additionally be on course to achieve Grade A at AS Mathematics.

## Course structure

There are two papers at the end of Year 12 forming the AS qualification, one for Core Maths and the other for Statistics and Mechanics. At the end of Year 13 there are three papers for the A Level, two in Core Maths and one in Statistics and Mechanics.

### AS Level Mathematics

#### Paper one Pure Maths one:

Covers proof, algebra, functions, coordinate geometry and circles, binomial expansion, trigonometry, exponentials and logarithms, differentiation and integration, and vectors.

#### Paper two Statistics and Mechanics:

Covers sampling, data presentation and interpretation, probability, statistical distributions, hypothesis testing, quantities and units in mechanics, kinematics, and forces and Newton's laws.

### A Level Mathematics

#### Paper one Pure Maths one:

This covers the same content as the AS Pure Maths one, but examined to a deeper level.

#### Paper two Pure Maths two:

This extends the knowledge of the topics of Pure Maths and additionally includes numerical methods.

#### Paper three Statistics and Mechanics:

This extends the knowledge of the topics of Statistics and Mechanics and additionally includes moments.

#### Further Mathematics

Once students have settled into the AS Maths course those who are excelling have the option to take up AS Further Maths. This involves studying Further Pure Maths content, and a choice of one of Decision or additional Mechanics, Statistics, or Further Pure Maths.

## Method of study

The course is taught didactically with plenty of opportunity for questioning, investigating and solving problems as a group or individually.

Students are encouraged to make use of the maths site on the Claires Court hub with its links to maths related news articles and TED videos, puzzles, revision sites, extension material and past papers, mark schemes and examiner reports. They will also have the opportunity to attend a "Maths Inspiration Day" to experience some of the UK's most inspiring maths speakers performing live.

## How is the course assessed?

The entire course is assessed by written examinations, two at the end of Year 12, and three at the end of Year 13. At AS Level the Pure Maths paper is two hours and the Applied paper is one hour, while at A Level all three papers are two hours.

## Where does it lead?

Mathematics is useful in almost any career, and can lead to a huge variety of exciting professional job opportunities in business, engineering, scientific research, government service, code breaking, weather forecasting, logistics and finance including actuarial work, accountancy and banking.

Awarding Body: Pearson  
Contact: Mrs Rachel Barnes  
Email: [rlb@clairescourt.net](mailto:rlb@clairescourt.net)

*Course specifications may be subject to change as directed by the examining board.*





# Media Studies

## About the course

Media Studies is central to understanding twenty-first-century culture. It is a relevant and challenging subject where you can explore a diverse range of topics such as consumers and producers in film, TV, social media, video games, and the music industry. We live in the midst of the 'Information Age' where media constantly saturates our everyday lives. Whether we use iPads, television, or simply go to the cinema we are constantly consuming media and sharing our thoughts with others. Media Studies gives students the opportunity to become confident discerners of all types of media, as well as starting their journey in a more professional context.

## Requirements for success

### Entry requirements:

GCSE English - Grade 5 minimum preferred

### Who is suitable for this course?

Anyone who is interested in studying the media and exploring its vital role in creating our views and perspectives as well as its role of the media in influencing our perspective.

## Course structure

In AS Media Studies students will learn practical skills by creating the opening scenes of a thriller film working in specialist roles such as directors, editors and visual effects designers. The examination component (taken at the end of the two year course) is split into two parts. The first part is analysis of representation in a television extract. For the second part of the paper, students will study the film industry.

The course is split into:

### Component one Foundation Portfolio

- 50% coursework - thriller film opening production and planning

One paper, two parts:

### Component two Key Media Concepts Examination

- 25% Representation (an unseen TV drama source)

### Component two Part B Audiences and Institutions Examination

- 25% will be an institutions and audience examination (the UK and US film industry).

\*Please note AS Media Studies will make up 50% of your A2 Media Studies grade

In A2 Media Studies students will undertake a music video promotion package for their coursework component, which includes the creation of a social media page, and a digipak album release. The exam is split into three parts. The first part is on media debates (postmodern media and power and the media) and the second part of this exam will be on the topic of power and the media. Finally, the third part of this exam is on media ecology. The exam answers will be evaluated using examples from films, television, gaming, journalism, social media and music videos.

For A-Level, the AS grade will be brought forward which will amount to 50% of the overall grade.

The course is split into:

### Component three Advanced Portfolio

- 50% coursework - music promotion package for an artist or band

One paper, two parts (50% of total A-Level grade):

### Component four (Part A) Critical Media debates examination - two part question on media debates - Postmodernism and Power and the Media

Such topics will include:

- postmodern media disrupts representation

- the way audiences react differently in a postmodern world
- relationships between texts and their producers and audiences
- the construction and reception of marketing messages
- the mediation of their identities in the media

### Component four (Part B) Media ecology examination - One part question on media ecology

Such topics will include:

- audience engagement with evolving media environments
- technological change including the collection and sharing of information
- the impact of developing technologies
- globalisation and the impact of this on audiences

## Method of study

A mixture of filmmaking, music video print, and production combines with analysis in essay writing to offer an exciting experience to students, allowing you to try out practical skills and new theoretical perspectives.

## How is the course assessed?

The course is 50% coursework and with a two part paper at AS and A Level.

## Where does it lead?

Media Studies is a stepping stone to university. It also leads to a career in advertising, marketing, filmmaking and digital media such as website development and social media marketing. Cambridge is also recognised for enabling students to have a global perspective with regards to media texts.

Awarding Body: Cambridge Int.  
Contact: Mr Sam Robertson  
Email: [snr@clairescourt.net](mailto:snr@clairescourt.net)

*Course specifications may be subject to change as directed by the examining board.*



# Modern Foreign Languages: French, German, Spanish

## About the course

The A Level courses in languages –French, German or Spanish, are designed to enable you to develop your linguistic skills alongside your understanding of the culture and society of countries where the target language is spoken.

## Requirements for success

### Entry requirements:

Minimum Grade 7 in the chosen language.

### Who is suitable for this course?

You should have a passion for your chosen language and the countries in which it is spoken. You must be prepared to spend time expanding your knowledge of contemporary issues through reading and listening in the target language.

## Course structure

### A Level/AS

AS examined at the end of Year 12

A Level examined at the end of Year 13.

## Method of study

Lessons are taught using a highly communicative approach with a focus on speaking and listening. Students are expected to match contact hours with independent study outside the classroom.

*"My daughter had such a happy two years at Claires Court. Thank you for giving her so much love and support."*

*Year 13 Parent*

## Course outline

### Units covered:

#### AS

##### Paper one

Listening, reading and writing. Aspects of society, current trends; artistic culture; translation into English

##### Paper two

Writing. An essay on a text or a film (from a prescribed list); translation into the target language

##### Paper three

Speaking. General conversation based on two stimulus cards using topics from Paper 1

#### A2

##### Paper one

Listening, reading and writing. Aspects of society, current trends and current Issues; artistic culture; aspects of political life; translation into English; translation into the target language

##### Paper two

Writing. An essay on each of the two works they have studied (a book and a film, or two books)  
Paper three - Speaking. General discussion based on a stimulus card, followed by presentation and further discussion on an individually researched project

A visit to the target language speaking country is a course requirement, though this can be arranged privately.

## How is the course assessed?

### AS assessed at end of Year 12

Paper one - one hours and 45 minutes

Paper two - one hour and 15 minutes

Paper three - 12 to 14 minutes

### A Level assessed at the end of Year 13

Paper one - two hours and 30 mins;

Paper two - two hours

Paper three - 21-23 minutes;

## Where does it lead?

The world is your oyster with an A Level MFL! Languages are also regarded as facilitating subjects by university admissions tutors for all academic courses.

Awarding Body: AQA

Contact: Ms Eva Urzaiz

Email: emu@clairescourt.net

*Course specifications may be subject to change as directed by the examining board.*





# Music

## About the course

The course at both AS and A Level allows you to develop your performance, compositional and appraising skills.

## Requirements for success

### Entry requirements:

Grade 6 at GCSE Music, as well as Grade 5 standard in chosen instrument/voice.

### Who is suitable for this course?

You need to have a performance standard of Grade 5 on an instrument or voice.

## Method of study

The units are delivered in a number of ways including teacher led topics or student led sessions. Composition tasks are carried out individually. Instrumental staff assist the students in preparing solo pieces.

## How is the course assessed?

The course is 100% externally assessed.

*"Our daughter is making new friends, enjoying her studies and is very happy with the teaching support she is getting."*

*Year 12 Parent*

## Where does it lead?

This can lead to a career in Music involving Music Technology, teaching and other music related careers.

Awarding Body: Pearson  
Contact: Mr Nicholas Wolstencroft  
Email: niw@clairescourt.net

*Course specifications may be subject to change as directed by the examining board.*

## Course structure

### A Level

The Pearson Edexcel Level Three Advanced GCE in Music is 100% externally assessed, and consists of one written paper and two non-examined assessment components.

## Course outline

### A Level

#### Units covered:

#### • Component one - Performing

A public performance of one or more pieces, performed as a recital lasting for 8 minutes of music (30% of the qualification).

#### • Component two - Composing

Total of two compositions, one to a brief set by Pearson and one either free composition or also to a brief, lasting a minimum of 6 minutes between them (30% of the qualification).

#### • Component three - Appraising

Knowledge and understanding of musical elements, contexts and language through studying set works (40% of the qualification). Is assessed by a written paper lasting for two hours.



# Music Technology

## About the course

Aimed at students with a passion for music and technology, this course covers all aspects of a fast moving and exciting industry. You will learn the techniques involved with recording, composing, editing and manipulating sound, as well as understanding how the industry works and relevant historical contexts.

## Requirements for success

### Entry requirements:

Preferred: Five GCSE's and Grade 3 standard on an instrument or voice.

### Who is suitable for this course?

This course will appeal to you, if you:

- are creative
- have an interest in exploring how technology can be used in music making and performance
- enjoy exploring new ways of thinking
- enjoy working on task based projects

## Course structure

### A Level

A Level linear GCE in Music Technology. The award comprises of four units.

## Course outline

### Units covered at A Level:

#### Component one:

Recording 20%

#### Component two:

Technology Based Composition 20%

#### Component three:

Listening and Analysing Exam 25%

#### Component four:

Producing and Analysing Exam 35%

## Method of study

The course features a range of taught workshops including recording live performance, sequencing and composing. Further practical workshops are included where students are encouraged to apply and explore the techniques they have learned leading to the successful completion of practical assignments.

## How is the course assessed?

The course includes a mixture of coursework assignments and two examinations. The examinations are a mixture of short answer, essay and practical mixing tasks.

## Where does it lead?

This course can lead in many directions, to further study in Music or Music Production degree courses or into employment areas such as:

- Live Sound Engineering
- Studio Engineer
- Music Production
- Music Publishing
- Music Promotion
- Record Companies
- Music Composer/Performer

Awarding Body: Pearson  
Contact: Mr Daniel Gravett  
Email: [dng@clairescourt.net](mailto:dng@clairescourt.net)

*Course specifications may be subject to change as directed by the examining board.*

*"The school has provided our son a great start in life and really encouraged him to believe in himself."*

*Year 12 Parent*





# Photography

## About the course

Photography will give you the opportunity to develop your creative skills through the media of digital images. You can work in a variety of fields or subject matter, such as landscape, architecture, portraiture and photojournalism.

## Requirements for success

### Entry requirements:

To achieve the maximum potential from the course, you must be literate and have good essay writing skills along with strong analytical skills. Achieving at least a pass at GCSE in English Language is essential.

### Who is suitable for this course?

An interest in photography and art and an imaginative and creative mind are essential. Good attendance, punctuality and the ability to keep to deadlines in this subject are very important.

## Course outline

Students must choose to work in one or more of the following areas of photography:

- Portraiture, documentary and/or photojournalism
- Landscape (urban, rural and/or coastal)
- Working from objects, still life or from the natural world
- Experimental imagery

As these are fairly broad areas and students can work in overlapping areas, candidates will be able to base personal photographic studies on subjects or themes that interest them.

## Method of study

This is a practical based course with taught lessons (around 25%) designed to support students' practical coursework and set assignment tasks. Students are strongly encouraged to work independently and much of the practical work is done outside of timetabled lessons. Successful students are those that manage their time to allow for the essential work of building up a library of carefully planned photo-shoots.

## How is the course assessed?

The examining board's four assessment objectives are used as the basis for internal progress and assessment. After the final marks are submitted to the examining board, an external moderator visits the school to assess a sample of the students' work.

## Where does it lead?

This subject is ideally suited for those interested in pursuing any creative or art related courses. The content also makes it well suited for those wishing to work or study in media, information technology as well as the many different fields of photography itself, such as commercial, medical, scientific and advertising. It is also useful as a support subject for students who wish to pursue careers in design or business, as it shows the creative skills necessary to succeed in these areas.

Awarding Body: OCR  
Contact: Mrs Jane Wimshurst  
Email: [jzw@clairescourt.net](mailto:jzw@clairescourt.net)

*Course specifications may be subject to change as directed by the examining board.*

## Course structure

**Internal Skills Development Programme:** During the first term students are introduced to the technical and creative elements that will help them in producing their examined assignments.

**Personal Investigation:** This is an in-depth practical unit of work together with a 3,000 word essay. This unit is worth 60% of the A Level mark.

**Externally Set Task:** The questions for the externally set task are available from February when students are in Year 13. Students will be required to respond to one of the questions set by OCR, making certain that their practical and written work covers all four assessment objectives. This task is worth 40% of the A Level mark.



# Physical Education

## About the course

The course has been designed to allow you to study Physical Education in an academic setting, enabling you to critically analyse and evaluate your experience of practical activity in developing your knowledge and understanding of the subject.

## Requirements for success

### Entry requirements:

You are expected to have successfully completed a GCSE in Physical Education but this would not exclude candidates who had not done so. However, the specifications have been designed to provide progression by building on the knowledge, understanding and skills studied at Key Stage 4. Most candidates will normally have achieved at least the equivalent of GCSE Grade 6 in PE or should be regularly competing in one sport to a high level.

### Who is suitable for this course?

This course is suitable for you if you have a passion for sport and are seeking further education or careers in PE teaching, Physiotherapy, Medicine, Sports Science for example.

## Course structure

In Year 12 the following topics are researched:

### Physiological factors affecting Performance:

Applied anatomy and physiology, exercise physiology and biomechanics.

### Psychological and socio-cultural themes in PE:

Skill acquisition, sports psychology and sport and society.

### Performance in PE:

Performance or coaching of an activity (taken from an approved list in accordance with OCR).

In Year 13 the following topics are researched:

### Physiological factors affecting performance:

Applied anatomy and physiology, exercise physiology and biomechanics.

### Psychological factors affecting performance:

Skill acquisition and sports psychology.

### Socio-cultural issues in physical activity and sport:

Sport and society, contemporary issues in physical activity and sport.

### Performance in PE:

Performance or coaching, evaluation and analysis of performance for improvement.

## Method of study

In addition to standard class and homework, students are expected to read widely around the subject to build and enhance knowledge and understanding of the subject content. The syllabus is mainly taught through theoretical means and very few lessons are practically based. Essay questions are covered frequently as they are an important factor within the examination.

## How is the course assessed?

Candidates sit exams at the end of two years of study.

## A Level:

### Component one:

Physiological factors affecting performance: two hour examination, worth 30% of total A Level.

### Component two:

Psychological factors affecting performance: one hour examination, worth 20% of total A Level.

### Component three:

Socio-cultural issues in physical activity and sport: one hour examination, worth 20% of total A Level.

### Component four:

Performance in PE: non-examination assessment, worth 30% of total A Level.

## Where does it lead?

This course will prepare learners for the further study of Physical Education or Sports Science courses as well as other related subject areas such as Psychology, Sociology and Biology.

Awarding Body: OCR  
Contact: Mrs Niomi Lee  
Email: nil@clairescourt.net

*Course specifications may be subject to change as directed by the examining board.*





# Physics

## About the course

From the birth and death of stars, to the fleeting interactions of tiny particles, Physics studies how our world works. It is a fascinating subject driven by our desire to find out how and why matter behaves the way it does, from atomic fundamental particles in our everyday life, to the movements of stars and galaxies in the Universe. Physics is not only interesting, it is also highly marketable.

## Requirements for success

### Entry requirements:

To achieve the maximum potential for the course, you should have achieved at least a Grade 7 at GCSE physics or a Grade 7-7 in Combined Science. As there is a mathematical element to the course, we strongly recommend that you have a grade 6 or higher in GCSE Mathematics.

### Who is suitable for this course?

Achieving an A Level in Physics makes a statement that you have acquired valuable skills such as:

- the ability to make realistic judgement based on evidence rather than prejudice
- a fluency in logical and mathematical reasoning
- the ability to deal with numbers and abstract concepts
- problem solving, modelling and computational skills.

*"Small class sizes and friendly teaching groups means I get a lot of focus and attention."*

## Course structure

A Level Physics is comprised of six modules. Modules one to six are examined at the end of Year 13 for the A Level qualification (three exam papers).

## Course outline

### Units covered:

#### Year 12

Unit one: Development of practical skills

Unit two: Foundations of Physics

Unit three: Forces and motion

Unit four: Electrons, waves and photons

#### Year 13

Unit five: Newtonian world and astrophysics

Unit six: Particles and medical physics

## Method of study

During the course much emphasis is placed on practical work and problem solving tasks and students will be expected to work individually or collaboratively to achieve the expected standard. There will also be theory lessons where relevant principles and ideas will be discussed and notes taken. Videos and computer programmes will be used to illustrate concepts.

Students are encouraged to explore the subject, to complete their own research notes and to seek tutor support whenever it is needed.

## How is the course assessed?

A combination of assessment techniques will be used. Students will be required to take three formal written papers at the end of the course. These will include mostly mathematical problem solving questions and some short descriptive questions. They will be a mixture of multiple choice and structured questions. There will also be a series of practical activities taken throughout the course to demonstrate practical competence.

## Where does it lead?

The range of skills acquired by students successful at A Level Physics are highly rated and in great demand in business, industry, education and research.

Awarding Body: OCR

Contact: Mrs Helen Williams

Email: [haw@clairescourt.net](mailto:haw@clairescourt.net)

*Course specifications may be subject to change as directed by the examining board.*



# Politics

## About the course

The A Level Politics specification is designed to encourage you to develop your critical thinking skills and enhance your ability to interpret, evaluate and comment on the nature of politics. You will acquire knowledge of the structures of authority and power within the political system of the United Kingdom and are encouraged to think and debate more widely about how other political systems may differ.

## Requirements for success

### Entry requirements:

Preferably at least a Grade 6 in both English Literature or History and English Language.

### Who is suitable for this course?

You must have a genuine and lively interest in current affairs and the workings of the world around you, particularly the exercise of power by governments and institutions as well as individual politicians. You must enjoy debating and discussion and most importantly of all be open-minded and have the ability to communicate your ideas effectively both in writing and orally.

## Course structure

A Level Politics is a linear two year qualification with written exams at the end of the course.

## Course outline

In the first year of study the specification concentrates on people, politics and participation as well as governing modern Britain, retaining much of the content from the previous specification. In the second year US politics and US government and ideologies will be studied.

## Method of study

This A Level is delivered by a mixture of whole class teaching, individual and group work, together with student presentations, debates and written essays. Subject to interest there will be a joint visit to the Houses of Parliament with the History department and the department will seek to attend student conferences.

## How is the course assessed?

Politics will be assessed through a combination of three written exams based on the government and politics of the UK; the government and politics of the USA (comparative study) and political ideas.

## Where does it lead?

A Level Politics is a good choice for students considering a career in the professions, or those who simply want to understand how the world works. Politics goes well with Economics, History and English. Politics does not just appeal to Social Science students, however: increasingly Art and Drama students have enrolled to study Politics, giving them a broader perspective on the world.

Many students who have taken the A Level in Politics go on to study Politics at university. From there you might become a researcher, join local or national government or even start on the path to become a future Prime Minister! But there are other job options too. If you fancy a career in journalism or media, this course is very useful. Students also go on to become teachers or work in the legal profession.

Awarding Body: AQA  
Contact: Mr Pádraic Flynn  
Email: [ppf@clairescourt.net](mailto:ppf@clairescourt.net)

*Course specifications may be subject to change as directed by the examining board.*





# Psychology

## About the course

Psychology - "the study of mind and behaviour".

On this course you will find out something about your mind and your behaviour, as well as gaining some insights into the behaviour of others.

Are you interested in people?

Do you often wonder why people behave the way they do and make the decisions that they take? Do you find yourself asking questions about why someone behaves one way in one situation, but very differently in another?

Are you genuinely curious about people in general? If the answer is yes, the studying Psychology might provide you with some of the answers.

## Requirements for success

### Entry requirements:

To do well in Psychology you will need to have achieved a Grade 6 in GCSE Maths and it is strongly recommended that you also have a Grade 6 in English Language and at least Grade 6 in Science.

### Who is suitable for this course?

As Psychology is increasingly becoming more scientific, to be successful you will require skills of both literacy and numeracy. You will need to be able to communicate your ideas effectively as well as draw conclusions, which are based on the analysis of empirical data. You need to be able to construct coherent essays as well as handle data.

## Course structure

This course has been designed to provide a broad introduction to the scope and nature of psychology as a Science. The emphasis is on applying knowledge and understanding rather than just acquiring knowledge. As a result you will develop transferable skills of analysis, evaluation and critical thinking. Students will develop an appreciation of how society makes decisions about scientific issues and how the sciences contribute to the success of the society. There is no coursework, but throughout both years students will have the opportunity to conduct experiments and research, as well as analysing data using a variety of mathematical techniques.

## Course outline

### Unit one:

Introductory Topics in Psychology, which will include social influence, memory, attachment and psychopathology.

### Unit two:

Psychology in context, which will include Biopsychology and research methods.

### Unit three:

Issues and options in Psychology, which may include topics such as aggression, stress and gender. A Level students take all three units.

## Method of study

As well as the usual classwork and homework which is set regularly, students will need to be prepared to read widely and make use of all the

resources in the library and on The Hub. All students are encouraged to participate in discussions in order to develop their skills of constructing coherent arguments. There are also practical based lessons throughout the course, designed to allow students to practice their research methods skills.

## How is the course assessed?

The course is assessed entirely through exams sat at the end of the course. There are three two hour exams.

## Where does it lead?

Naturally, if you want to go on and study Psychology at university, then an A Level in the subject will be very useful. However, Psychology is also beneficial for anyone wanting to go on to any career working with people. If you are thinking about a career in any of the following areas – Medicine, Nursing, Advertising, Marketing, Teaching, Speech Therapy, Sports Coaching, Occupational Therapy, to name but a few, then this might be the subject for you.

Awarding Body: AQA

Contact: Mrs Rosaria Lamagna-Richardson

Email: [rs1@clairescourt.net](mailto:rs1@clairescourt.net)

*Course specifications may be subject to change as directed by the examining board.*



# Religious Studies: Philosophy and Ethics

## About the course

A detailed study of Christianity focusing on religious beliefs.

## Requirements for success

### Entry requirements:

As the entire A Level is essay based, it is recommended that you have at least a Grade 6 in GCSE English as an indicator of your ability to write academically. Study of GCSE Religious Studies is helpful but not essential as course content is significantly different.

### Who is suitable for this course?

Students who have the ability to think critically with an empathetic and analytical approach to the world around them.

## Course structure

### A Level

The following three components are studied over the course:

#### Philosophy of Religion

Philosophical issues and questions; the nature and influence of religious experience; problems of evil and suffering; philosophical language; works of scholars; influences of developments in religious belief.

#### Ethics

Significant concepts in issues or debates in religion and ethics; a study of three ethical theories; application of ethical theories to issues of importance; ethical language; deontology, virtue ethics and the works of scholars; medical ethics: beginning and end of life issues.

## Study of Religion and Dialogues

Religious beliefs, values and teachings; sources of wisdom and authority; practices that shape and express religious identity; social and historical developments; works of scholars; religion and society; primary texts.

## Method of study

In addition to standard class and homework, students are expected to read widely around the subject to build and enhance their knowledge. Lessons will often be discussion based with essays serving as the main form of assessment.

## How is the course assessed?

There will be two three hour examinations at the end of Year 13.

## Where does it lead?

The subject is widely recognised by universities as an academic subject that provides students with essential transferable skills including the ability to sustain a critical line of argument. It is a highly employable qualification that can lead students to a wide range of degrees and careers.

Awarding Body: AQA

Contact: Mrs Emma Le Neve Foster

Email: [ell@clairescourt.net](mailto:ell@clairescourt.net)

*Course specifications may be subject to change as directed by the examining board.*





# Sociology

## About the course

Sociology offers insights into social and cultural issues. It helps you develop a multi-perspective and critical approach to understanding issues around the power of the media, culture, family, education, crime and social power. You will ask yourself 'why has society developed like this?'

## Requirements for success

### Entry requirements:

You should have achieved a minimum of Grade 5 in your English Language GCSE.

### Who is suitable for this course?

Sociology is suitable for people who want to make sense of the society we live in and understand the cultural and identity issues which affect us all, learn a number of skills including the use of evidence to support their arguments, how to investigate facts, develop critical thinking skills.

## Course structure

The course is studied over two years with three A Level exams at the end of Year 13.

*"Our daughter is making friends and feeling integrated into the Sixth Form already; we are very happy with the start she has made."*

*Year 12 Parent*

## Course outline

### Units covered:

Core themes in education and sociological research methods and Crime and Deviance with research methods and sociological theories. Optional topics include families and households, and the media.

## Method of study

The course will be studied as a whole class with opportunities for small group work, discussions, debates and structured examination technique learning. The students will have the opportunities to explore film production techniques and make film clips in respect of their studies into the media and its influence.

## How is the course assessed?

There are three exams, each account for one third of your A Level grade. The

three exams last 2 hours and are worth 80 marks each. The exams consist of a mixture of short answers and extended writing questions.

## Where does it lead?

Sociology is a great choice for people who want a career in social work, nursing or medicine. However, the subject is also useful for other careers, like marketing, advertising, PR, journalism, the police, probation service or teaching.

Awarding Body: AQA

Contact: Ms Lisa Quéré

Email: [lmq@clairescourt.net](mailto:lmq@clairescourt.net);

*Course specifications may be subject to change as directed by the examining board.*



# Sport Extended Diploma BTEC

Level 3

## About the course

The BTEC Nationals have been developed in collaboration with employers and representatives from higher education and relevant professional bodies. In this way, Pearson have ensured that content is up to date and that it includes the knowledge, understanding, skills and attributes required in the sector.

## Requirements for success

### Entry requirements:

Five GCSEs at Level 9 to 4 or equivalent, including English and preferably GCSE PE.

### Who is suitable for this course?

This course is suitable for you if you have a passion for sport and think you are likely to either seek employment or higher education in the area of sport or leisure.

## Course outline

Students will study: Anatomy and physiology; fitness testing; practical sport; rules, regulations and officiating; professional development of sports industry; fitness training and programming; leadership in sport; coaching for performance; skill acquisition; investigating business in sport; research methods; sports based work experience; OAA; development and provision of sports and physical activity.

## Method of study

Of the 14 units students study, 10 will be assessed via assignments set and marked by their teachers throughout the year. These assignments will generate the evidence needed to demonstrate that they have the appropriate knowledge and skills needed for that unit. The remaining four units will be assessed externally with either an exam or timed assignment set and marked by Pearson.

## How is the course assessed?

Assessment is specifically designed to fit the purpose and objective of the qualification. It includes a range of assessment types and styles suited to vocational qualifications in the sector. There are a combination of centre set and assessed project work, Pearson set and assessed project work and a formal examination for one of the units.

## Where does it lead?

At the end of the course the students will be able to apply to university to study a course related to sport or will be in a position to search for employment within the sports industry.

Awarding Body: Pearson  
Contact: Mr James Hammerton  
Email: [jmh@clairescourt.net](mailto:jmh@clairescourt.net)

*Course specifications may be subject to change as directed by the examining board.*

## Course structure

The course is made up of 14 units which students will study for over two years. At the end of the course students will be awarded a 'BTEC Extended Diploma in Sport'. This is equivalent to three A Levels.

*"The course has helped me focus on my own performance as an athlete as well as my career."*





# Art & Design Textiles

## About the course

During the A Level Textiles course, you will have the opportunity to explore a wide variety of experiences through the media of textiles, developing your existing skills, as well as acquiring a wide range of new techniques.

## Requirements for success

### Entry requirements:

To achieve the maximum potential for the course, you should have a good grade at GCSE in a Textiles based discipline or Art and Design, a pass with a Grade 5/6 (or equivalent) is desirable. You should also have a supporting portfolio of textiles work.

### Who is suitable for this course?

You are expected to have an enquiring mind, be well motivated and have an eagerness to develop your textiles skills to a higher standard. We are looking for students who are passionate about this subject and are highly self-motivated to meet the practical and coursework demands.

contemporary artists. Students learn to view artists' work within its context and recognise the work's relevance in relationship to your own creative development. Project based work will allow you to pursue an idea from initial research and through to preparation for a final textiles or fashion piece.

## Course outline

### Units covered over two years of study:

Component one - the Personal Investigation involving supporting studies and practical work.  
Component two - the Externally Set Assignment with supporting studies and preparatory work.

## Method of study

A Level Textiles encourages an adventurous and enquiring approach to Art and Design. Students will spend time researching artists, gathering visual references and taking own photographs. Students will be experimenting with assorted media and embellishment techniques as well as developing ideas towards a final outcome. There will be a requirement to travel to exhibitions, art galleries, architectural sites and studios. Candidates will be expected to demonstrate an understanding of past and contemporary art and design practice and be able to produce artwork that embraces a range of ideas.

## AO2

Explore and select appropriate resources, media, materials, techniques and processes, reviewing and refining ideas as work develops.

## AO3

Record ideas, observations and insights relevant to intentions, reflecting critically on work and progress.

## AO4

Present a personal and meaningful response that realizes intentions and, where appropriate, makes connections between visual and other elements. Each assessment carries an equal percentage of 25% of the final mark. The weighting of components one and two are equal - 50%.

## Where does it lead?

This course not only creates an opportunity for those interested in Textiles related degrees which could include Fashion, Fashion PR and Relations, Fashion Marketing, Fashion Business, Fashion Promotion and Communication, Fashion Journalism, Interior Design, Costume Design, Cosmetics, Textiles Manufacture and Retail Marketing but will also ignite a lifelong interest in working with fabric.

Awarding Body: AQA  
Contact: Miss Lauren Moorhouse  
Email: lma@clairescourt.net

*Course specifications may be subject to change as directed by the examining board.*

## Course structure

### A Level

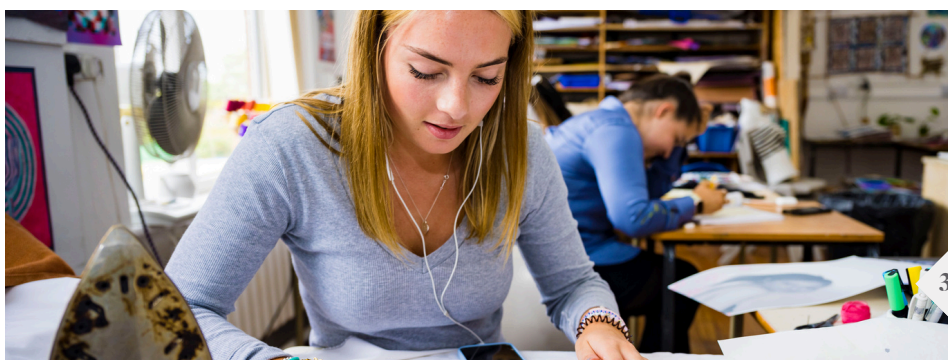
Work is modular and enables students to explore a wide range of experiences within the medium of textiles, with one coursework project and one externally set assignment. There is a strong emphasis on observational skills and direct personal experience. Experimental work which includes; constructed and embellished textiles, dyeing, printing and fine art introduces students to a variety of techniques through which you can communicate your ideas. Projects are designed to stimulate visual awareness through pictorial research of both historical and

## How is the course assessed?

### The following assessment criteria is applied to all units:

#### AO1

Develop ideas through sustained and focused investigations informed by contextual and other sources, demonstrating analytical and critical understanding.



## About the course

The Pearson BTEC Level 3 National Extended Certificate in Travel and Tourism is equivalent in size to one A level. It is designed for students interested in learning about the fundamentals of the travel and tourism sector alongside other fields of study. The qualification gives a broad introduction to the travel and tourism industry, with an emphasis on core knowledge and fundamental skills that are transferable across other sectors. The objective of the qualification is to support progression to higher education.

## Requirements for success

### Entry requirements:

Students are required to have GCSE Mathematics minimum of Grade 5 and GCSE English minimum of Grade 5 or above.

### Who is suitable for this course?

Anyone who has a keen interest in travel, both in the UK and abroad, who would like to find out more about the importance of this industry to the economy and how successful attractions market themselves. Students could be aiming to progress and study at University, or use the skills developed through the qualification and apply them in an apprenticeship. This qualification can be taken as part of a diverse programme, alongside other vocational qualifications and/or other A level subjects.

## Method of study

Whole class, individual and group work to prepare presentations, discussions and written essay answers. Use is made of online resources as the travel and tourism sector continues to evolve. Practical skills require students to research and work individually as they are assessed on these through formally set synoptic tasks.

## Course outline and assessment

Students study three mandatory units:

### Unit one: The World of Travel and Tourism

This unit is assessed through a one hour 30 minute written examination. This is externally set and marked by Pearson. The result in this unit contributes to 25% of the final qualification grade.

### Unit two: Global Destinations

This unit is assessed through an externally set and marked assignment that students will complete under supervised conditions. Students are given information two weeks before a supervised assessment period in order to carry out research. The supervised assessment period is undertaken in a single session of three hours. The result in this unit contributes to 33% of the final qualification grade.

### Unit three: Principles of Marketing in Travel and Tourism

In this unit students are required to apply learning from across the qualification to develop a marketing plan for a new product or service for a travel and tourism organisation or global destination. The result in this unit contributes to 25% of the final qualification grade.

Students also study one further unit:

### Unit four: Visitor Attractions

This unit requires students to investigate the nature and role of both built and natural visitor attractions, their commercial success, appeal, response to diverse visitor needs and the importance of delivering a memorable visitor experience. You are internally assessed through a presentation, a written article and a written report. The result in this unit contributes 17% of the final qualification grade.

## Where does it lead?

BTEC Level 3 Extended Certificate in Travel and Tourism provides a pathway to further travel and tourism related degree programmes as well as courses in Higher Education and apprenticeships. The qualification will give students transferable knowledge, understanding and broad skills and higher-order skills that are highly regarded by higher education providers and employers. For example, researching destinations and visitor attractions and analysing their success particularly encourages development of skills crucial for employment further down the line, project management, prioritising and effective communication.

Awarding Body: Pearson  
Contact: Mr Damian Gray  
Email: [drg@clairescourt.net](mailto:drg@clairescourt.net)

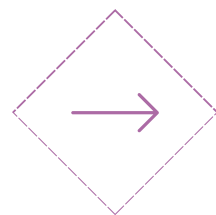
*Course specifications may be subject to change as directed by the examining board.*







*Your Future*



# What Subjects Should You Take?

## *A Guide to Sixth Form Subject Combinations & Future Pathways*

The following guide\* provides general advice but it's important to conduct specific research and consult with universities to tailor your subject combinations to your individual goals and aspirations:

- ◆ **Complementary Subjects:** Consider pairing subjects that have some overlap or complement each other well. For example if you are interested in computer science, you might also consider studying mathematics.
- ◆ **Prerequisites and Core Subjects:** Take into account any specific courses required for your preferred higher education course.
- ◆ **Broaden Your Horizons:** While focusing on your primary area of interest, consider including subjects from different disciplines to broaden your knowledge and skills. This can help you develop a well-rounded education and adaptability.
- ◆ **Future Career Prospects:** Research the job market and the skills in demand for your desired career path. Choose subjects that align with those skills and enhance your employability.
- ◆ **Personal Passion:** Most importantly, remember to choose subjects that you genuinely enjoy and find interesting - passion and enthusiasm for a subject can greatly enhance your learning experience.

University Course / Career	Sixth Form Subject Combination Suggestions
Accountancy, Accounting and Finance	Maths, Business Studies or Economics, History, Politics
Administration / the Civil Service	Subjects include: English, History, Economics, Geography, Politics, Modern Languages, Sciences.
Agriculture	Biology, Chemistry, Physics, Geography
Architecture	Maths, Art useful, Physics, English, Modern Languages. Also Business Studies & History.
Banking, Finance, Insurance	Business Studies, Economics, Maths. A Modern Language, History very useful.
Biochemistry, Biology, Botany, Zoology, Marine Biology	Chemistry and one from Biology, Maths or Physics
Business Studies, Business Management and Marketing	Maths, Business Studies, Languages, History, Politics, Geography
Chartered Surveyor	Geography, Maths, Economics, Art and Design
Chemistry	Chemistry, Biology, Maths or Physics
Computer Science, Information Technology	Maths, Further Maths, Physics, IT, Religious Studies
Criminology	Psychology, Sociology, Sciences, Politics, History, RS
Design	Design Technology, Maths, Physics, Business Studies or Art for a career in 'artistic' design.
Economics	Maths is desirable. Business Studies or Economics or a combination of art or science subjects. History, Politics.



<b>Engineering, Civil Engineering, Mechanical Engineering, Chemical Engineering</b>	Maths, Physics, Chemistry, Economics, Business Studies and a language.
<b>English, Drama and Theatre Studies</b>	English Literature, Drama and Theatre Studies, Modern Language or History
<b>Fine Art</b>	Art, English, History or any combination
<b>Geography</b>	Geography, Maths, Biology, Physics, Chemistry, History, Politics
<b>Geology or Earth Sciences</b>	At least two from Maths, Physics, Chemistry and Biology
<b>History</b>	History, Languages, English or Economics, Politics, RS
<b>History of Art</b>	Art, History, English, Modern Language
<b>Journalism</b>	English, Modern Language or any combination, Politics, History
<b>Law</b>	History, English, Politics, Economics useful (Art is not recognised as an entry qualification for Law School).
<b>Leisure Industry, Sports Science</b>	Business Studies, Economics, Chemistry, Biology
<b>Management Studies</b>	Maths, Economics or Business Studies, Politics, History
<b>Maths</b>	Maths, Further Maths, Physics, Chemistry, Biology, Economics
<b>Media and Communications</b>	English, Modern Languages, Media Studies
<b>Medicine, Veterinary Science, Dentistry</b>	Chemistry, Biology, Maths
<b>Modern Languages</b>	Modern Languages, English, History, Geography, Business Studies, Art, Politics, RS
<b>Music</b>	Music A-Level or practical music skills (grade 8 on more than one instrument).
<b>Natural Sciences</b>	Maths, Chemistry, Physics and Biology
<b>Nursing</b>	Biology, Chemistry, Psychology, Sociology
<b>Pharmacy</b>	Chemistry plus at least one from Biology, Maths and Physics
<b>Physics</b>	Physics, Maths plus Economics, Business Studies, Chemistry, Biology, Further Maths
<b>Politics and International Relations</b>	Politics, History, RS, Sociology, Maths, English Literature
<b>Psychology</b>	Must include Chemistry, Biology, Mathematics, Physics or Psychology
<b>Sociology</b>	Sociology, a science subject, preferably biology, Politics, History, Geography
<b>Teaching</b>	English, Maths, a science or a curriculum subject (for Secondary teaching a degree in the same subject is necessary).
<b>Theology and Religious Studies</b>	Religious Studies, English, History, Politics

*\*This is a guide and subject to change*

# Sixth Form Destinations Map 2023 & 2024



**CLAIRE'S COURT  
SIXTH FORM**

**1 – UNIVERSITY OF KENT**  
Business & Management

**2 – RAVENSBOROUGH UNIVERSITY, LONDON**  
Fashion

**3 – CITY, UNIVERSITY OF LONDON**  
Media, Communication and Sociology

**4 – UNIVERSITY OF WEST LONDON**  
Future Food and Culinary  
Management

**5 – UNIVERSITY OF GREENWICH**  
Criminology and Criminal Justice

**6 – UCL (UNIVERSITY COLLEGE LONDON)**  
Psychology and Language Sciences

**7 – POINT BLANK MUSIC SCHOOL**  
Music Production

**8 – ST MARY'S UNIVERSITY, TWICKENHAM**  
Sports Coaching Science

**9 – UNIVERSITY OF BRIGHTON**  
Creative Writing  
Philosophy, Politics, Ethics  
Social Science

**10 – UNIVERSITY OF SUSSEX**  
Politics and International Relations

**11 – UNIVERSITY OF CHICHESTER**  
Sport and Exercise Science  
(Performance Sailing)

**12 – UNIVERSITY OF SURREY**  
Sport and Exercise Science  
(with Foundation)  
Psychology

**13 – ROYAL HOLLOWAY**  
Management with Human Resources  
Biology with Integrated Foundation Year  
Business and Management (Year in Business)  
History  
Management with International Business

**14 – UNIVERSITY OF READING**  
Law  
Applied Psychology (Clinical)  
Business and Management  
Philosophy Business & Ethics

**15 – UNIVERSITY OF PORTSMOUTH**  
Environmental Science

**16 – UNIVERSITY OF SOUTHAMPTON**  
Psychology  
Aeronautics and Astronautics  
Business Management  
Law  
Business Management (with Placement)  
Biomedical Sciences

**17 – AMERSHAM & WYCOMBE  
COLLEGE / PINEWOOD**  
Set and Prop Making

**18 – BOURNEMOUTH UNIVERSITY**  
Events Management with  
Foundation  
Television Production  
Sport Management  
Media Production  
Television Production

**19 – ARTS UNIVERSITY BOURNEMOUTH**  
Interior Architecture and Design

**20 – UNIVERSITY OF PLYMOUTH**  
Product and Furniture Design

**21 – UNIVERSITY OF EXETER**  
Mechanical Engineering  
Medical Sciences  
Neuroscience  
Exercise and Sport Sciences  
Flexible Combined Honours  
Communications  
Accounting and Finance

**22 – BATH SPA UNIVERSITY**  
Acting  
Geography (Human)

**23 – UNIVERSITY OF BATH**  
Computer Science & Artificial Intelligence MComp  
International Development with Economics  
Physics  
Sport (Sports Performance)  
Sport Management and Coaching

**24 – NORLAND**  
Early Childhood Education and Care

**25 – UNIVERSITY OF BRISTOL**  
Environmental Geoscience

**26 – UNIVERSITY OF THE WEST OF ENGLAND**  
IBusiness (Team Entrepreneurship)  
Drama and Acting

**27 – OXFORD BROOKES UNIVERSITY**  
Art Foundation  
Computing Foundation  
Law  
Psychology  
Real Estate

**28 – ROYAL AGRICULTURAL UNIVERSITY**  
Real Estate with Foundation Year

**29 – UNIVERSITY OF GLOUCESTERSHIRE**  
Music Business (with Placement)

**30 – CARDIFF UNIVERSITY**  
Business Management (with Placement)  
Financial Mathematics  
Media, Journalism and Culture  
Psychology (with Placement)

**31 – CARDIFF METROPOLITAN UNIVERSITY**  
Sports Coaching (with Foundation)  
Sport and Exercise Science

**32 – SWANSEA UNIVERSITY**  
Chemistry (with Foundation)  
Geography (with a Year in Industry)  
Mechanical Engineering (with Placement)  
Sport & Exercise Science (with Year Abroad)

**33 – UNIVERSITY COLLEGE BIRMINGHAM**  
Marketing Management

**34 – UNIVERSITY OF BIRMINGHAM**  
History and Politics  
Economics and Politics  
Physical Sciences

**35 – ASTON UNIVERSITY, BIRMINGHAM**  
Logistics with Supply Chain Management

**36 – UNIVERSITY OF LEICESTER**  
Biological Sciences (Neuroscience)

**37 – LOUGHBOROUGH UNIVERSITY**  
Sport and Exercise Psychology  
(with placement)

**38 – UNIVERSITY OF NOTTINGHAM**  
Electrical and Electronic Engineering  
Religion, Philosophy and Ethics  
Geography BA  
Mathematics  
English and French

## OTHER DESTINATIONS

- Gap Year – 14
- Apprenticeship – 4
- College – 1
- Full-Time Employment – 4
- Overseas Education – 2

Russell Group Universities

**53 – QUEEN'S UNIVERSITY, BELFAST**  
Philosophy

**52 – STIRLING UNIVERSITY**  
GSK Degree Apprenticeship  
Sport Business Management

**51 – UNIVERSITY OF STRATHCLYDE**  
Business Enterprise & Finance

**50 – NEWCASTLE UNIVERSITY**  
Psychology

**49 – LANCASTER UNIVERSITY**  
English Literature and Creative Writing

**48 – UNIVERSITY OF YORK**  
Chemistry

**47 – SHEFFIELD HALLAM UNIVERSITY**  
Business and Management

**46 – LEEDS ARTS UNIVERSITY**  
Art Foundation

**45 – UNIVERSITY OF SHEFFIELD**  
Mechanical Engineering (with Industrial Placement)

**44 – MANCHESTER METROPOLITAN UNIVERSITY**  
Sports Business Management

**43 – LIVERPOOL INSTITUTE FOR  
PERFORMING ARTS**  
Sound Technology

**42 – UNIVERSITY OF LIVERPOOL**  
English  
Philosophy

**41 – BANGOR UNIVERSITY**  
Professional Policing

**40 – KEELE UNIVERSITY**  
Medicinal Chemistry and Neuroscience

**39 – NOTTINGHAM TRENT UNIVERSITY**  
Sport and Exercise Science  
Journalism  
Real Estate  
Media Production  
Business Management and Economics  
Economics with International Finance and Banking  
Aerospace Engineering  
Paramedic Science  
Sport Science and Management  
Politics and International Relations  
Economics with International Finance and Banking  
Sport Science and Management  
Business









# Clares Court Sixth Form Student

## *Apprenticeships and Placements 2023 & 2024*

Choosing what to study after Year 11 is one of the most important decisions you will make. With the right selection, your time in the Sixth Form will prepare you successfully for the next stage of your lifelong learning journey.

Students are encouraged to talk to their Form Tutors, Subject Teachers, Sixth Form Leadership Team and our Careers Lead teacher about their post-18 plans. Our staff are here to help you to consider the relevant courses that will enable you to access the best universities, apprenticeships and high-quality employment. Our school organises a Careers Fairs for students in Years 10-12 to provide valuable insights into various career paths and help them make informed decisions about their future. Students can interact with professionals from different industries, learn about job requirements and qualifications, and explore potential career opportunities.

Our curriculum offers a broad range of courses and has been designed to give you the opportunity to choose wisely for your post-18 plans. These are a range of our apprenticeships and placements from the past two years.

Apprenticeship/Placement	Area
 BRITISH AIRWAYS	Aircraft Maintenance
 CyberCube	Internship
 VSS VIDEO SCREEN SERVICES	Live Event Technician Apprenticeship
 Deloitte.	Bright Start Apprenticeship - Financial Crime
 GuyCarpenter	CSS team for Reinsurance (US)
IDN Apprenticeships &  Clancy	CSR and Sustainability



## Gap Year

Several of our students have embarked on a Gap Year post Sixth Form including travelling, volunteering and work experience in the UK and abroad.

Any other questions?

*Get in touch*

01628 327710 | [registrar@clairescourt.com](mailto:registrar@clairescourt.com)

1 College Avenue, Maidenhead, SL6 6AW

[www.clairescourt.com](http://www.clairescourt.com)







